



White Fences Opener

Show Host: RGB/NCH Equestrian

Show ID #

#DB2008A & DB2008B

August 29th 2020
Hobbit Hollow Farm
3061 W. Lake Road
Skaneateles, NY

Interscholastic Equestrian Association Point Show

The following have been invited to officiate:

Judge

Karry Brothers “L”
Stephentown, NY

Manager

Ronald Bartholomew
Jordan, NY

Steward

Mo Farrell, IEA Coach
Camillus, NY

Medical Personnel

Giavanna M. Cotrupe
Syracuse, NY

Secretary

Ronald Bartholomew
Jordan, NY

*****QUALIFICATION STATEMENT*****

Membership in IEA is mandatory; only teams and individuals who are members may compete. Member's paperwork must be processed and the Member activated on the team roster prior to entering an IEA show pursuant to Rule 2000 in the *IEA Rules and Regulations of Membership*.

Sportsmanship Statements

(To be printed in the prize list and program)

Rule 1500: The IEA was established to provide competitive and educational opportunities through equestrian athletics. Good horsemanship and honorable participation are priorities at every event. It is the responsibility of all attendees to foster a spirit of belongingness, an atmosphere of community enjoyment, and a mutual respect for all participants and their equine partners. All attendees must commit to the following oath:

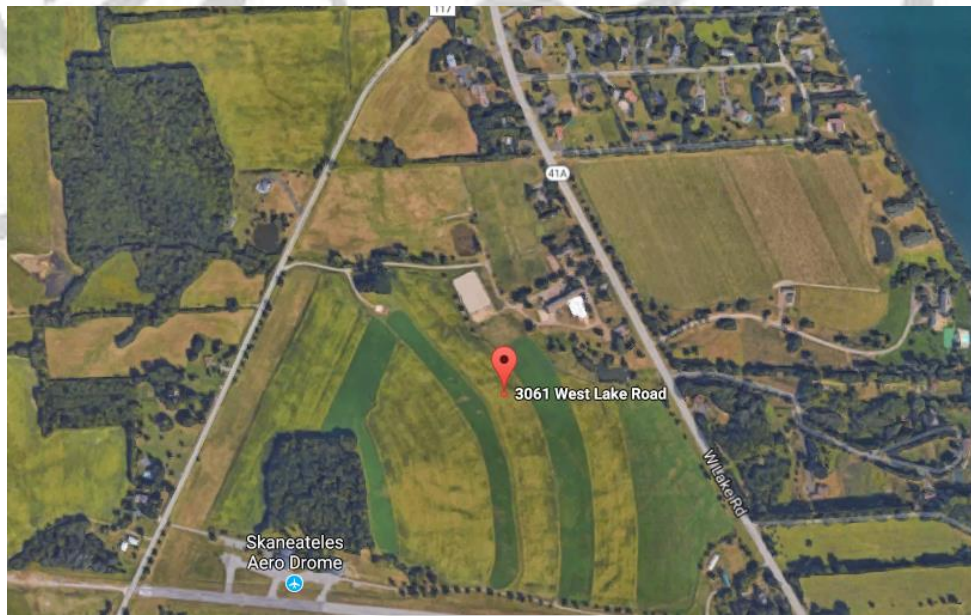
Oath: (To be publicly stated at the start of all IEA events)

In representation of the participants at this event, I promise to respect and abide by the governing rules of the Interscholastic Equestrian Association and to represent myself, my team, and this association in the spirit of good horsemanship and honorable competition.

Directions to Show

Directions to Show

GPS: 3061 West Lake Road, Skaneateles, NY 13152



Food Concessions: Will NOT be available! Please Bring your own seating!

IEA Participant COVID-19 Checklist

Equestrian competitions are one of the few athletic offerings currently permitted. To ensure IEA shows may continue operating, all attendees share responsibility in being COVID-19 conscious and proactive in safeguarding themselves and others. Everyone taking part in an IEA show, including but not limited to, those working as paid staff members or volunteers, participating as coaches or riders, or attending as spectators **must** follow IEA COVID-19 MANDATES.

Along with precautions that event hosts will be implementing, participants and spectators at IEA shows will need to cooperate with and contribute to efforts limiting exposure and spread of COVID-19. Before heading out to an IEA show, please review the following checklist and new rule - IEA COVID-19 MANDATES.

- Take your temperature before leaving home. Anyone with a temperature of 99.5 or higher may not attend the show.
- Stay home if feeling ill or exhibiting any symptoms of COVID-19.
- Check the horse show prize list for additional COVID-19 notes or directives specific to the host facility.
- Ensure all attendees have signed any additional COVID-19 waivers of liability that might be required.
- Limit the number of spectators attending to one per rider.
- Wash and/or sanitize your hands upon arrival at the show and frequently while in attendance. Bring your own personal supply of hand sanitizer and/or disinfectant wipes.
- Wear a face covering (Mask) in any setting where there is a possibility of being within six feet of other individuals and when not mounted on a horse. Riders will not be penalized for opting to wear a face covering (Mask) while competing. Attendees are expected to provide their own masks.
- Come dressed ready to ride. Changing rooms will not be available on site.
- Coordinate with your team coach about the show schedule, arrival time, and means for communicating with one another during the show.
- Wait in your vehicle until it is time to ride. Congregating ringside (indoors or outside) in groups will not be permitted.
- Maintain Social-Distancing of at least 6 feet between non-family members when out of your car and moving around the show grounds.
- Depart the show grounds as soon as your last class is complete.

- Bring your own snacks, drinks, and coffee. Do not expect vendors of food or other goods to be on site.
- Advise the IEA membership office (info@rideiea.org) if any person is diagnosed with COVID-19 within 14 days of attending an IEA event.

NEW RULE - IEA COVID-19 MANDATES

For the 2020-21 Competition Season all IEA shows and participants (show staff, volunteers, coaches, riders, and spectators) **must** adhere to the following IEA COVID-19 MANDATES:

IEA COVID-19 MANDATES

- Verification of personal temperature of less than 99.5 degrees before arriving on Show grounds.
- Regardless of temperature, do not attend the Event if feeling ill, showing any signs that could potentially be related to COVID-19, or if you have been in contact with anyone diagnosed or showing symptoms of COVID-19 within 14 days of the event.
- Face covering (Mask) must be worn in any setting where there is a possibility of being within six feet of other individuals (who are not members of their immediate household), and when not mounted on a horse. If an individual needs a mask accommodation due to a verifiable health condition under the Americans with Disabilities Act, please notify the show host at least 24 hours prior to the start of the competition. Attendees will be expected to provide their own masks.
- Hands must be washed and/or sanitized upon arrival at Show grounds and frequently while in attendance. Attendees should bring a personal supply of hand sanitizer.
- Maintain Social-Distancing of at least 6 feet between non-family members.
- Advise the IEA membership office if any person is diagnosed with COVID-19 within 14 days of attending an IEA Event.

National/State/Local Government and/or Health Department rules may differ from these IEA Guidelines/Rules. In ALL cases, the more restrictive regulations, recommendations, guidelines and requirements will prevail.

Dressage Class Descriptions

Dressage Test Classes

Class 1. Varsity Open Dressage Test

Test: IEA Open Rider Test

Open to riders in grades 9-12. Riders must be able to walk, trot, canter & halt in a group class. These riders should be capable of performing Dressage Seat Equitation Tests 1-14.

Class 3. Varsity Intermediate Dressage Test

Test: IEA Intermediate Rider Test

Open to riders in grades 9-12. This division is open to all riders who have not competed in a recognized or schooling dressage competitions at Second level. Riders must be able to walk, trot, canter & halt in a group class. Riders may not have competed in the FEI 5 year old test or above. Riders may not have been rated B or higher by the United States Pony Clubs, Inc. Riders who have won 10 or more blue ribbons in jumping events at 3'3" or higher must be placed in the Open Varsity Division. These riders should be capable of performing Dressage Seat Equitation Tests 1-11.

Class 5. JV Novice Dressage Test

Test: IEA Novice Rider Test

Open to riders in grades 9-12. This division is open to all riders who have not competed in 6 or more first level tests or competed at a level higher than first level in any recognized or schooling dressage competition guidelines on equivalent FEI and foreign federation tests. Riders may not have competed in the FEI 4 year old test or above. Riders may not have been rated C+, C-3 or higher by the United States Pony Clubs, Inc. Riders must be able to walk, trot, canter & halt in a group class. These riders should be capable of performing Dressage Seat Equitation Tests 1-7.

Class 9. Future Intermediate Dressage Test

Test: IEA Intermediate Rider Test

Open to riders in grades 4 - 8. This division is open to all riders who have not competed in a recognized or schooling dressage competitions at Second level. Riders may not have competed in the FEI 5 year old test or above. Riders may not have been rated B or higher by the United States Pony Clubs, Inc. Riders must be able to walk, trot, canter & halt in a group class. These riders should be capable of performing Dressage Seat Equitation Tests 1-11.

Class 11 - Future Novice Dressage Test

Test: IEA Novice Rider Test

Open to riders in grades 4 - 8. This division is open to all riders who have not competed in 6 or more first level tests or competed at a level higher than first level in any recognized or schooling dressage competition guidelines on equivalent FEI and foreign federation tests are in the appendix of the rules). Riders may not have competed in the FEI 4 year old test or above. Riders may not have been rated C+, C-3 or higher by the United States Pony Clubs, Inc. Riders must be able to walk, trot, canter & halt in a group class. These riders should be capable of performing Dressage Seat Equitation Tests 1-7.

Dressage Seat Equitation Classes

Class 2. Varsity Open Dressage Seat Equitation

Open to riders in grades 9-12. Riders must be able to walk, trot, canter & halt in a group class. These riders should be capable of performing Dressage Seat Equitation Tests 1-14.

Class 4. Varsity Intermediate Dressage Seat Equitation

Open to riders in grades 9-12. Riders must be able to walk, trot, canter & halt in a group class. These riders should be capable of performing Dressage Seat Equitation Tests 1-11.

Class 6. JV Novice Dressage Seat Equitation

Open to riders in grades 9-12. Riders must be able to walk, trot, canter & halt in a group class. These riders should be capable of performing Dressage Seat Equitation Tests 1-7.

Class 7. JV Beginner Dressage Seat Equitation - Walk/Trot/Canter

Open to riders in grades 9-12. This division is open to any rider that has not competed in 6 training level test or competed at a level higher than training, in any recognized or schooling dressage competition; including those recognized by USDF, USEF or USEA. Riders may not have been rated C-2 above by the United States Pony Clubs, Inc. Riders must be experienced enough to canter on an unfamiliar animal in a group. To be eligible for Class 7, a rider must have had at least one year continuous professional instruction, must demonstrate proficiency at the trot and canter, and be capable of competing on a variety of unfamiliar horses. These riders should be capable of performing Dressage Seat Equitation Tests 1-6. **Riders may not enter cross-enter into class Class 8 Walk/Trot.**

Class 8. JV Beginner Dressage Seat Equitation - Walk/Trot

Open to riders in grades 9-12 who meet the criteria for Class 7 but are not yet ready to compete on an unfamiliar horse at the canter. These riders should be capable of performing Dressage Seat Equitation Tests 1-5. Individual points will be tracked in Class 8 Walk/Trot for post season qualification. No team points will be awarded in Class 8 Walk/Trot during regular or post season shows. **Riders may not cross-enter Class 7 Walk/Trot/Canter.**

Class 10. Future Intermediate Dressage Seat Equitation

Open to riders in grades 4 - 8. Riders must be able to walk, trot, canter & halt in a group class. These riders should be capable of performing Dressage Seat Equitation Tests 1-11.

Class 12. Future Novice Dressage Seat Equitation

Open to riders in grades 4 - 8. Riders must be able to walk, trot, canter & halt in a group class. These riders should be capable of performing Dressage Seat Equitation Tests 1-7.

Class 13. Future Beginner Dressage Seat Equitation - Walk/Trot/Canter

Open to riders in grades 4-8 who meet the eligibility requirements for Class 7. These riders should be capable of performing Dressage Seat Equitation Tests 1-6. **Riders may not cross enter into Class 14 Walk/Trot.**

Class 14. Future Beginner Dressage Seat Equitation - Walk/Trot

Open to riders in grades 4-8 who meet the criteria for Class 8. These riders should be capable of performing Dressage Seat Equitation Tests 1-5. Individual points will be tracked in Class 14 Walk/Trot for post season qualification. No team points will be awarded in Class 14 Walk/Trot during regular or post season shows. **Riders may not cross-enter Class 13 Walk/Trot/Canter.**

Dressage Seat Equitation Tests

1. Ask an appropriate horsemanship question that is tailored to the ability level.
2. Halt
3. Transitions using the walk, rising trot and canter
4. 20m circles
5. Change horses
6. Ride without stirrups at the trot
7. Figure eight or serpentine at the trot demonstrating change of diagonals
8. Ride without stirrups at the canter
9. Figure eight at the canter demonstrating changes of lead through the trot
10. Lengthening at the trot
11. Sitting Trot
12. Lengthening at the canter
13. 10m circles at the trot
14. 15m circles at the canter

Example Time Schedule

*An updated schedule with times included will be posted on the show calendar by the Friday prior to the show.

7:00 Schooling of Dressage Test Horses

7:30 Draw Horses for Dressage Classes

8:15 Coaches Meeting

8:30 Competition Begins:

1A. Varsity Open Dressage Test

1B. Varsity Open Dressage Test

2A. Varsity Open Dressage Seat Equitation

2B. Varsity Open Dressage Seat Equitation

3A. Varsity Intermediate Dressage Test

3B. Varsity Intermediate Dressage Test

4A. Varsity Intermediate Dressage Seat Equitation

4B. Varsity Intermediate Dressage Seat Equitation

9A. Future Intermediate Dressage Test

9B. Future Intermediate Dressage Test

10A. Future Intermediate Dressage Seat Equitation

10B. Future Intermediate Dressage Seat Equitation

5A. JV Novice Dressage Dressage Test

5B. JV Novice Dressage Dressage Test

6A. JV Novice Dressage Seat Equitation

6B. JV Novice Dressage Seat Equitation

11A. Future Novice Dressage Test

11B. Future Novice Dressage Test

12A. Future Novice Dressage Seat Equitation

12B. Future Novice Dressage Seat Equitation

7A. JV Beginner Dressage Seat Equitation W/T/C

7B. JV Beginner Dressage Seat Equitation W/T/C

13A. Future Beginner Dressage Seat Equitation W/T/C

13B. Future Beginner Dressage Seat Equitation W/T/C

8A. JV Beginner Dressage Seat Equitation W/T

8B. JV Beginner Dressage Seat Equitation W/T

14A. Future Beginner Dressage Seat Equitation W/T

14B. Future Beginner Dressage Seat Equitation W/T

It is the coach's responsibility to communicate to their riders the appropriate time to enter the show venue.

General Rules

Responsibility:

In exchange for entrance to and participation in the show, this entry constitutes an agreement and affirmation that the team making it, and each of its riders, coaches, trainers, and representatives shall accept and abide by the Rules and Regulations of the IEA and of the Show, and that each rider, coach and Team: (1) is a member in good standing of IEA, (2) is eligible as entered, and (3) will accept as final all rulings of IEA and the show steward (or committee) with respect to their conduct. **Also, through participation each rider, rider's parents/legal guardians, coach, trainer, and participant acknowledges THAT HORSES ARE INTRINSICALLY DANGEROUS AND UNPREDICTABLE AND CAN CAUSE SERIOUS INJURY OR DEATH**, thus each agrees to indemnify, defend and hold harmless IEA, its officers, directors, members, employees, Executive Director, National Steward, agents and representatives, the Event Host Coordinator, the host team and facility, the show stewards, stewards committee members, the show judges, the show secretary, all show organizers and officials, and all persons, stables, and others providing facilities, horses or equipment for the Show, other riders, coaches, teams and team sponsoring institutions, from any claim, action or suit, for injury, property damage or death sustained by the individual, rider, entity, coach, trainer, or participant while traveling to, from and around the show, while staying in the city for the show, during participation in the show and while at the show. This entry constitutes an acceptance of the hired officials at this event.

New Guidelines:

It is the responsibility of the team coach(es) to confirm that they, their riders and attending family members have self-monitored their temperature once daily prior to entering the competition grounds.

Anyone with a temperature of 99.5° F or higher may not enter the facility.

Anyone who:

- Exhibits COVID-19 symptoms,
 - Has tested positive or been given a diagnosis of COVID-19 within the last two weeks, or
 - Has been in contact with someone who has tested positive for COVID-19 within the last two weeks*
- Cannot enter the competition grounds.**

***Exception: Healthcare personnel who have treated patients using appropriate medical-grade PPE during the course of performing professional duties are exempted from this restriction.**

All staff, officials, volunteers, service providers, coaches, parents and riders are required to wear a face mask or face covering in any setting where there is a possibility of being within six feet of other individuals (who are not members of their immediate household), and when not mounted on a horse.

If an individual needs a mask-related accommodation under the American Disabilities Act, please notify the show host at least 24 hours prior to the start of the event.

It is the coach's responsibility to communicate to their riders the appropriate time to enter the show venue.

Entries:

4106.1 Once a team has fulfilled its hosting obligation to the Region per Rule 4106, it may consult with the Zone Administrator to approve additional shows limiting entries in any fair and equitable manner. The Zone Administrator may also grant additional and priority entries to riders from the host team. The total number of rides from the host team may not exceed 50% of the total number of rides entered in the show

Entries will not be accepted without an IEA number listed for each rider.

A team roster showing proof of rider eligibility must be included with the entry form per rule #5314.

Entries will be accepted on a first received basis with full payment until all spots are filled, and may limited in any fair way. Entries for members of Dressage region # 2 will open on 8/11/2020 All entries will close on 8/25/2020, or when classes fill to capacity. **Each individual will be charged \$50 per Dressage Test class and \$40 per Dressage Seat Equitation class.** One rider in each class should be marked as the priority entry. Scratches can be made with full refund before closing date. After the closing date, entry fees will only be refunded if a substitute team or rider can fill the opening. Checks should be made payable to **RGB Equestrian**. **Entries MUST also be emailed: ronniegbinc@gmail.com**

Dressage Format:

The general format will follow the Rules and Regulations as established by the IEA unless otherwise stated. However, if a topic is not covered by these Rules and Regulations, the rules and regulations of the Intercollegiate Horse Show Association [“IHSA”], the United States Equestrian Federation, Inc. [“USEF”], the United States Dressage Federation [“USDF”] and the Intercollegiate Dressage Association [“IDA”], may be used as a reference for guidance in making an equitable decision under the circumstances. Any decisions made by a steward or show management shall be final.

All horses will be provided by the host. Horses and Order of Go will be assigned by a random draw on the day of competition. Before dressage test classes, each rider will be allowed only four laps around the ring with two changes of direction, and must follow the pattern posted by the show steward. All classes will be judged on equitation, and faults of the horse will not be judged. If a horse should perform so poorly that it is impossible to fairly judge the rider, the judge may request a re-ride. Any other requests for re-rides will be determined by the steward.

-All riders must wear ATSM approved protective headgear whenever mounted.

Dressage Awards:

- The Champion Dressage Rider Award will be given to the Varsity Open rider with the highest dressage test score of the day.

- Team Championship: Each team will designate one point rider for each class in the Varsity and Junior Varsity and Future divisions. Different riders may be designated for flat and fences. A champion and reserve will be awarded to (1) The High Point Upper School Team and (2) The High Point Futures Team. Points will be awarded as follows: 1st=7 points, 2nd=5 points, 3rd=4 points, 4th=3 points, 5th=2 points, 6th=1 point.

- Sportsmanship Award will be given to the individual chosen by show officials to exemplify outstanding qualities of good sportsmanship.

-Horse of the Show Award (4509.5) - The EHC of each regular IEA sanctioned show will award the “Horse of the Show” to be chosen by the judge and/or show steward. The award should be given to the horse, regardless of points earned during the course of competition, who best demonstrated fair and generous treatment toward its riders.

Questions Call (315)209-9186 Name of Contact: Ronald Bartholomew Email: ronniegbinc@gmail.com

AN UPDATED CLASS SCHEDULE WITH TIMES LISTED MUST BE SENT TO THE MEMBERSHIP OFFICE NO LATER THAN THE THURSDAY PRIOR TO THE SHOW. THIS SCHEDULE WILL BE POSTED ONLINE SO COACHES/FAMILIES KNOW WHEN TO ARRIVE/ENTER SHOW FACILITY.

UPPER SCHOOL Dressage Entry

Mail to:
Ronald Bartholomew
 313 Barker Road
 Jordan, NY 13080

IEA Show #DB2008A & DB2008B

 Name of Team

 Team Contact

 Email

 Phone

	Priority Entry	Weight under 100	Weight over 150	Weight over 200	Height under 5'	Height over 5' 8"	V Open Test	V Open seat eq	Varsity Int Test	Varsity Int Seat eq	JV Novice Test	JV Novice Seat eq	JV Beginner WTC	JV Beginner WT	Fees
Rider Name							1	2	3	4	5	6	7	8	
Total Amount Due:															

A team roster showing proof of rider eligibility must be included with the entry form per rule 5314.

Total Amount Enclosed: _____

In exchange for entrance to and participation in the show, this entry constitutes an agreement and affirmation that the team making it, and each of its riders, coaches, trainers, and representatives shall accept and abide by the Rules and Regulations of the IEA and of the Show, and that each rider, coach and Team: (1) is a member in good standing of IEA, (2) is eligible as entered, and (3) will accept as final all rulings of IEA and the show steward (or committee) with respect to their conduct. Also, through participation each rider, rider's parents/legal guardians, coach, trainer, and participant acknowledges THAT HORSES ARE INTRINSICALLY DANGEROUS AND UNPREDICTABLE AND CAN CAUSE SERIOUS INJURY OR DEATH, thus each agrees to indemnify, defend and hold harmless IEA, its officers, directors, members, employees, Executive Director, National Steward, agents and representatives, the Event Host Coordinator, the host team and facility, the show stewards, stewards committee members, the show judges, the show secretary, all show organizers and officials, all medical personnel, and all persons, stables, and others providing facilities, horses or equipment for the Show, other riders, coaches, teams and team sponsoring institutions, from any claim, action or suit, for injury, property damage or death sustained by the individual, rider, entity, coach, trainer, or participant while traveling to, from and around the show, while staying in the city for the show, during participation in the show and while at the show. This entry constitutes an acceptance of the hired officials at this event.

The Interscholastic Equestrian Association (IEA) recognizes the health and safety of participants as a top priority, and will continue to define important safety measures in response to COVID-19. However, participants, attendees, vendors and all others who may be physically present at an IEA event must be aware and acknowledge that attendance at any group sporting event carries with it the risk of exposure to airborne viruses, including COVID-19. By signing below, you acknowledge the inherent risks, including the public health risk presented by the Coronavirus, of participation/attendance in a group sporting event, and you specifically agree that IEA cannot guarantee your personal physical safety and cannot be held liable for participants' or attendees' possible exposure to viral diseases.

Programs may be modified or suspended immediately and without notice because of force majeure causes beyond the IEA's reasonable control and occurring without its fault or negligence including, but not limited to, acts of god, fire, wars, governmental action, terrorism, epidemic, pandemic, or any other event beyond the IEA's control.

It is the responsibility of the team coach(es) to confirm that they, their riders and attending family members have self-monitored their temperature once daily prior to entering the competition grounds. Anyone with a temperature of 99.5° F or higher may not enter the facility.

Coach's Signature: _____

FUTURES Dressage Entry

Mail to:
Ronald Bartholomew
 313 Barker Road
 Jordan, NY 13080

IEA Show #DB2008A & DB2008B

 Name of Team

 Team Contact

 Email

 Phone

	Priority Entry	Weight under 100	Weight over 150	Weight over 200	Height under 5'	Height over 5' 8"	Future Int Test	Future Int Seat eq	Future Nov Test	Future Nov Seat Eq	Future Beg WTC	Future Beg WT	Fees
Rider Name							9	10	11	12	13	14	
Total Amount Due:													

A team roster showing proof of rider eligibility must be included with the entry form per rule 5314.

Total Amount Enclosed: _____

In exchange for entrance to and participation in the show, this entry constitutes an agreement and affirmation that the team making it, and each of its riders, coaches, trainers, and representatives shall accept and abide by the Rules and Regulations of the IEA and of the Show, and that each rider, coach and Team: (1) is a member in good standing of IEA, (2) is eligible as entered, and (3) will accept as final all rulings of IEA and the show steward (or committee) with respect to their conduct. Also, through participation each rider, rider's parents/legal guardians, coach, trainer, and participant acknowledges THAT HORSES ARE INTRINSICALLY DANGEROUS AND UNPREDICTABLE AND CAN CAUSE SERIOUS INJURY OR DEATH, thus each agrees to indemnify, defend and hold harmless IEA, its officers, directors, members, employees, Executive Director, National Steward, agents and representatives, the Event Host Coordinator, the host team and facility, the show stewards, stewards committee members, the show judges, the show secretary, all show organizers and officials, all medical personnel, and all persons, stables, and others providing facilities, horses or equipment for the Show, other riders, coaches, teams and team sponsoring institutions, from any claim, action or suit, for injury, property damage or death sustained by the individual, rider, entity, coach, trainer, or participant while traveling to, from and around the show, while staying in the city for the show, during participation in the show and while at the show. This entry constitutes an acceptance of the hired officials at this event.

The Interscholastic Equestrian Association (IEA) recognizes the health and safety of participants as a top priority, and will continue to define important safety measures in response to COVID-19. However, participants, attendees, vendors and all others who may be physically present at an IEA event must be aware and acknowledge that attendance at any group sporting event carries with it the risk of exposure to airborne viruses, including COVID-19. By signing below, you acknowledge the inherent risks, including the public health risk presented by the Coronavirus, of participation/attendance in a group sporting event, and you specifically agree that IEA cannot guarantee your personal physical safety and cannot be held liable for participants' or attendees' possible exposure to viral disease.

Programs may be modified or suspended immediately and without notice because of force majeure causes beyond the IEA's reasonable control and occurring without its fault or negligence including, but not limited to, acts of god, fire, wars, governmental action, terrorism, epidemic, pandemic, or any other event beyond the IEA's control.

It is the responsibility of the team coach(es) to confirm that they, their riders and attending family members have self-monitored their temperature once daily prior to entering the competition grounds. Anyone with a temperature of 99.5° F or higher may not enter the facility.

Coach's Signature: _____



2020-2021

IEA MEMBER PARTNERS & SPONSORS

We greatly appreciate the support of all our Member Partners and Official Sponsors and ask you to thank them with your patronage.

MEMBER PARTNERS



NATIONAL REINING HORSE ASSOCIATION



UNITED STATES HUNTER JUMPER ASSOCIATION

UNITED STATES HUNTER JUMPER ASSOCIATION



EQUESTRIAN

UNITED STATES EQUESTRIAN FEDERATION



AMERICAN PAINT HORSE ASSOCIATION

AMERICAN PAINT HORSE ASSOCIATION



Where it all begins

THE UNITED STATES PONY CLUBS, INC.



NATIONAL SNAFFLE BIT ASSOCIATION



INTERCOLLEGIATE HORSE SHOWS ASSOCIATION



NATIONAL COLLEGIATE EQUESTRIAN ASSOCIATION



UNITED STATES DRESSAGE FEDERATION



INTERCOLLEGIATE DRESSAGE ASSOCIATION



CERTIFIED HORSEMANSHIP ASSOCIATION



WESTERN DRESSAGE ASSOCIATION OF AMERICA



AMERICAN QUARTER HORSE ASSOCIATION

AMERICAN QUARTER HORSE ASSOCIATION

OFFICIAL SPONSORS



Official Western Saddle of IEA



Official Show Clothes of IEA



Official Helmet of IEA



Official Tack and Equipment Supplier of IEA

For more information on becoming an IEA Member Partner or Sponsor, contact Megan Taylor at megan@rideiea.org.