

Interscholastic Equestrian Association Point Show

Hyde Park Haunting II

Hosted by

Topsail Equestrian

10/24 Co-Hosted By – Team Driftwood

10/25 Co-Hosted By – Team Driftwood & Stardust

Saturday and Sunday

October 24-25, 2020

5581 Hyde Park Road
Ravenel, SC 28470

Show ID #HB4059 and #HB4060

Entries open to Region 8 on September 30, 2020.

Entries close and payments must be received on October 14, 2020.

The following have been invited to officiate:

Saturday Judge

Megan Taylor, 'r'
Hilton Head, SC

Sunday Judge

Eddie Federwisch, 'r'
Bluffton, GA

Steward

Angela MacFawn, IHSA Coach
Blythewood, SC

Show Manager, Course Designer

Sara Turriago, IEA #936221
Ravenel, SC

Secretary

Susan Bidy, IEA #913025
Roswell, GA

Medical Personnel

Jeff Johnson
Charleston, SC

Qualification Statement

Membership in IEA is mandatory; only teams and individuals who are members may compete. Member paperwork must be processed and the member activated on the team roster prior to entering an IEA show pursuant to Rule 2000 in the *IEA Rules and Regulations of Membership*.

Sportsmanship Statements

Rule 1500: The IEA was established to provide competitive and educational opportunities through equestrian athletics. Good horsemanship and honorable participation are priorities at every event. It is the responsibility of all attendees to foster a spirit of belongingness, an atmosphere of community enjoyment, and a mutual respect for all participants and their equine partners. All attendees must commit to the following oath:

Oath: (To be publicly stated at the start of all IEA events)

In representation of the participants at this event, I promise to respect and abide by the governing rules of the Interscholastic Equestrian Association and to represent myself, my team, and this association in the spirit of good horsemanship and honorable competition.

Hunt Seat Class Descriptions

Jumping Classes

1. Varsity Open Equitation o/f 2'6": Open to riders in grades 9-12. Riders should be capable of jumping 3'-3'6" on their usual mounts at home. Riders may have shown in any Section 1 or Section 2 competition (Rule 3101) recognized or unrecognized, at 3'3" or above. Coaches should be confident these riders could safely perform over a 2'6" Hunter or equitation course on an unfamiliar horse. Riders participating in Varsity Open Over Fences are expected to compete throughout the season in Varsity Open Flat. To be eligible for post season competitions (individual or team) riders must have accumulated the required points and participated in a minimum of two (2) Varsity Open Flat classes during the regular season.

3. Varsity Intermediate Equitation o/f 2': Open to riders in grades 9-12. Riders should be capable of jumping 2'6"-3' on their usual mounts at home. Intermediate riders may have shown in any Section 1 or Section 2 competition (Rule 3101) at 3' (0.90 meters) or below in any discipline. Riders who have won 10 or more blue ribbons at 3' (0.90 meters) at any Section 1 or Section 2 competition (Rule 3101) must be placed in Varsity Open O/F. Coaches should be confident these riders would be able to safely perform over 2' hunter or equitation course on an unfamiliar horse. Riders participating in Varsity Intermediate Over Fences are expected to compete throughout the season in Varsity Intermediate or Varsity Open Flat. To be eligible for post season competitions (individual or team) riders must have accumulated the required points and participated in a minimum of two (2) Varsity Intermediate or Varsity Open Flat classes during the regular season.

5. Junior Varsity Novice Equitation o/f x-rails: Open to riders in grades 9-12. Riders should be capable of jumping 2'-2'6" on their usual mounts at home. Junior Varsity Novice riders may have shown in any Section 1 or Section 2 competition (Rule 3101) at 2'6" or below in any discipline. Riders who have won 10 or more blue ribbons at 2'6" at any Section 1 or Section 2 competition must be placed in the next higher appropriate level. Riders should have a minimum of one-year of professional instruction over fences. Coaches should be confident these riders would be able to safely perform over a x-rails Hunter or equitation course on an unfamiliar horse. Riders participating in Junior Varsity Novice Over Fences are expected to compete throughout the season in Junior Varsity Novice or Varsity Intermediate Flat. To be eligible for post season competitions (individual or team) riders must have accumulated the required points and participated in a minimum of two (2) Junior Varsity Novice or Varsity Intermediate Flat classes during the regular season.

9. Future Intermediate Equitation o/f 2': Open to riders in grades 4-8 who meet the criteria for Hunt Seat Class 1 or 3. Riders participating in Future Intermediate Over Fences are expected to compete throughout the season in Future Intermediate Flat. To be eligible for post season competitions (individual or team) riders must have accumulated the required points and participated in a minimum of two (2) Future Intermediate Flat classes during the regular season.

11. Future Novice o/f x-rails: Open to riders in grades 4-8 who meet the criteria for Hunt Seat Class 5. Riders participating in Future Novice Over Fences are expected to compete throughout the season in Future Novice or Future Intermediate Flat. To be eligible for post season competitions (individual or team) riders must have accumulated the required points and participated in a minimum of two (2) Future Novice or Future Intermediate Flat classes during the regular season.

Flat Classes

2. Varsity Open Equitation on the flat: Open to riders in grades 9-12. These riders should be capable of performing Hunt Seat Tests 1 – 16

4. Varsity Intermediate Equitation on the flat: Open to riders in grades 9-12. These riders should be capable of performing Hunt Seat Tests 1 - 13.

6. Junior Varsity Novice Equitation on the flat: Open to riders in grades 9-12. These riders should be capable of performing Hunt Seat Tests 1 - 10.

7. Junior Varsity Beginner Equitation on the flat Walk/Trot/Canter: Open to riders in grades 9-12 who are not eligible for Novice level jumping classes, but must be experienced enough to canter on an unfamiliar animal in a group. These riders should be capable of performing Hunt Seat Tests 1 through 7. A Beginner rider may not have shown over fences larger than 2' in any Section 1 or Section 2 competition (Rule 3101). To be eligible for Class 7, a rider must have had at least one year continuous professional instruction, must demonstrate proficiency at the trot and canter, and be capable of competing on a variety of unfamiliar horses. **Riders may not cross-enter into class Class 8 Walk/Trot.**

8. Junior Varsity Beginner Equitation on the flat Walk/Trot: Open to riders in grades 9-12 who meet criteria for class 7 but are not yet ready to compete on an unfamiliar horse at a canter. To be eligible for Class 8, riders must have at least six months continuous professional instruction, must demonstrate proficiency at a trot, and must be capable of competing on a variety of unfamiliar horses. These riders should be capable of performing Hunt Seat Tests 1 - 5. Individual points will be tracked in Class 8 Walk/Trot for post season qualification. No team points will be awarded in Class 8 Walk/Trot during regular or post season shows. Reference rule 3205.2 for advancement criteria. Riders may not cross-enter Class 7 Walk/Trot/Canter.

10. Future Intermediate Equitation on the flat: Open to riders in grades 4-8 who are capable of performing Hunt Seat Tests 1 - 13.

12. Future Novice Equitation on the flat: Open to riders in grades 4-8 who are capable of performing Hunt Seat Tests 1 - 10.

13. Future Beginner Equitation on the flat Walk/Trot/Canter: Open to riders in grades 4-8 who meet the eligibility requirements of Hunt Seat Class 7. These riders should be capable of performing Hunt Seat Tests 1 - 7. **Riders may not cross-enter Class 14 Walk/Trot.**

14. Future Beginner Equitation on the flat Walk/Trot: Open to riders in grades 4-8 who meet the criteria for Hunt Seat Beginner Class 8. To be eligible for Class 14, riders must have at least six months continuous professional instruction, must demonstrate proficiency at a trot, and must be capable of competing on a variety of unfamiliar horses. Individual points will be tracked in Class 14 Walk/Trot for post season qualification. No team points will be awarded in Class 14 Walk/Trot during regular or post season shows. These riders should be capable of performing Hunt Seat Tests 1 - 5. Riders may not cross-enter Class 13 Walk/Trot/Canter.

Championship Class

(Optional offering and does not count for points)

Varsity Open Championship Class – The top Varsity Open riders as determined by points and places within the show are eligible for this class. The class requires a minimum of six (6) riders, and should be limited to the top ten (10). Riders must be eligible to compete in Varsity Open Over Fences (2'6") to be eligible for this championship class. The class may be run using the same mount for both phases of the competition, or a separate draw may be done for each phase. The judge may choose to implement any additional testing after the completion of the two mandatory phases. Phase 1 – Riders will be judged over an advanced equitation course with jumps from 2'6" to 3'. Hunt Seat tests 1-16 may be asked. Phase 2 – Riders will also compete on the Flat and may be asked to perform any of tests 1-16.

Hunt Seat Tests Rule 3304

A rider must be prepared to perform the test appropriate for the class in which the rider is participating. Riders may be requested to perform the following tests collectively or individually during a show or competition. A Hunt Seat judge may choose from the following tests using tests 1-5 for Beginner walk/trot riders, tests 1-7 for Beginner W/T/C riders, tests 1-10 for Novice riders, tests 1-13 for Intermediate riders, and tests 1-16 for Open riders. Instructions for performance of the test must be publicly announced. Any one or combination of appropriate or equivalent tests may be used.

1. Asked an appropriate horsemanship question that is tailored to the rider's ability level
 2. Halt
 3. Sitting trot
 4. Two point position at the walk and/or trot
 5. Figure eight at trot, demonstrating change of diagonals
 6. Figure eight at canter on correct lead, demonstrating simple change of lead
 7. Change Horses
 8. Ride without stirrups at the trot
 9. Jump a shortened course
 10. Trot a jump
 11. Ride without stirrups at the canter
 12. Change leads down center of ring, demonstrating simple change of lead
 13. Half-turn on forehand and/or half-turn on haunches
 14. Canter on the counter lead
 15. Hand gallop
 16. Jump without stirrups
- (Jumping tests should only be used in over fences classes.)

Topsail Equestrian's Hyde Park Haunting II

October 24-25, 2020

Time Schedule

An updated schedule with times included will be posted on the show calendar by the Friday prior to the show.

6:30 am	Horse Draw (teams need not be present)
7:00 am	Team Check-in Available; Office Open
7:00 am	<i>Schooling of Open and Intermediate Horses</i>
8:15 am	Course Walk
8:30 am	Coaches Meeting
9:00 am - 1:00 pm	Horsemanship Test
9:00 am	Competition Begins
Class #2	Varsity Open on the Flat
Class #1	Varsity Open o/f 2'6"
Class #3	Varsity Intermediate o/f 2'
Class #9	Future Intermediate o/f 2'
Class #10	Future Intermediate on the Flat
Class #4	Varsity Intermediate on the Flat
	<i>Schooling of Novice and Beginner Horses</i>
Class #5	Junior Varsity Novice o/f X-rails
Class #11	Future Novice o/f X-rails
Class #12	Future Novice on the Flat
Class #6	Junior Varsity Novice on the Flat
Class #8	Junior Varsity Beginner on the Flat Walk/Trot
Class #7	Junior Varsity Beginner on the Flat Walk/Trot/Canter
Class #14	Future Beginner on the Flat Walk/Trot
Class #13	Future Beginner on the Flat Walk/Trot/Canter
	Presentation of Awards
	~ Team Champion, High School and Middle School
	~ Reserve Champion, High School and Middle School
	~ Sportsmanship Award
	~ Horsemanship Awards

It is the coaches' responsibility to communicate to their riders the appropriate time to enter the show venue.

General Rules

Responsibility:

In exchange for entrance to and participation in the show, this entry constitutes an agreement and affirmation that the team making it, and each of its riders, coaches, trainers, and representatives shall accept and abide by the Rules and Regulations of the IEA and of the Show, and that each rider, coach and Team: (1) is a member in good standing of IEA, (2) is eligible as entered, and (3) will accept as final all rulings of IEA and the show steward (or committee) with respect to their conduct. **Also, through participation each rider, rider's parents/legal guardians, coach, trainer, and participant acknowledges THAT HORSES ARE INTRINSICALLY DANGEROUS AND UNPREDICTABLE AND CAN CAUSE SERIOUS INJURY OR DEATH**, thus each agrees to indemnify, defend and hold harmless IEA, its officers, directors, members, employees, Executive Director, National Steward, agents and representatives, the Event Host Coordinator, the host team and facility, the show stewards, stewards committee members, the show judges, the show secretary, all show organizers and officials, all medical personnel, and all persons, stables, and others providing facilities, horses or equipment for the Show, other riders, coaches, teams and team sponsoring institutions, from any claim, action or suit, for injury, property damage or death sustained by the individual, rider, entity, coach, trainer, or participant while traveling to, from and around the show, while staying in the city for the show, during participation in the show and while at the show. This entry constitutes an acceptance of the hired officials at this event.

New Guidelines:

It is the responsibility of the team coach(es) to confirm that they, their riders and attending family members have self-monitored their temperature once daily prior to entering the competition grounds.

Anyone with a temperature of 99.5° F or higher may not enter the facility.

Anyone who:

- Exhibits COVID-19 symptoms,
- Has tested positive or been given a diagnosis of COVID-19 within the last two weeks, or
- Has been in contact with someone who has tested positive for COVID-19 within the last two weeks*

Cannot enter the competition grounds.

***Exception: Healthcare personnel who have treated patients using appropriate medical-grade PPE during the course of performing professional duties are exempted from this restriction.**

All staff, officials, volunteers, service providers, coaches, parents and riders are required to wear a face mask or face covering in any setting where there is a possibility of being within six feet of other individuals (who are not members of their immediate household), and when not mounted on a horse.

If an individual needs a mask-related accommodation under the American Disabilities Act, please notify the show host at least 24 hours prior to the start of the event.

It is the coach's responsibility to communicate to their riders the appropriate time to enter the show venue.

Entries:

4106.1 Once a team has fulfilled its hosting obligation to the Region per Rule 4106, it may consult with the Zone Administrator to approve additional shows limiting entries in any fair and equitable manner. The Zone Administrator may also grant additional and priority entries to riders from the host team. The total number of rides from the host team may not exceed 50% of the total number of rides entered in the show

Entries will not be accepted without an IEA number listed for each rider.

A team roster showing proof of rider eligibility must be included with the entry form per rule #5314.

Entries will be accepted on a first received basis with full payment until all spots are filled, and may be limited in any fair way. **Entries for members of Zone #4, Region #8 will open on 9/30/2020. All entries will close on 10/14/2020** or when classes fill to capacity. Each individual will be charged **\$40 per class**. There is no entry fee for Varsity Open Championship if offered. One rider in each class should be marked as the priority entry. Scratches can be made with full refund before closing date. After the closing date, entry fees will only be refunded if a substitute team or rider can fill the opening. **Checks should be made payable to Topsail Equestrian.**

Hunt Seat Format:

The general format will follow the Rules and Regulations as established by the IEA unless otherwise stated. However, if a topic is not covered by these Rules and Regulations, the rules and regulations of the Intercollegiate Horse Show Association [“IHSA”] and United States Equestrian [“USEF”] for the Hunt Seat Division and the American Quarter Horse Association [AQHA”] and the National Reining Horse Association [“NRHA”] for the Western Division may be used as a reference for guidance in making an equitable decision under the circumstances. Any decisions made by a steward or show management shall be final.

All horses will be provided by the host team. Horses and Order of Go will be assigned by a random draw on the day of competition. Before jumping classes, each rider will be allowed **only two** warm-up fences, in the pattern posted by the show steward. Warm-up fences may only be changed by a steward or show official. All classes will be judged on equitation, and faults of the horse will not be judged. If a horse should perform so poorly that it is impossible to fairly judge the rider, the judge may request a re-ride. Any other requests for re-rides will be determined by the steward.

-All riders must wear ATSM approved protective headgear whenever mounted.

Hunt Seat Awards:

-The Leading Rider Award will be given to the winner of the Varsity Open Championship (if offered).

-Team Championship: Each team will designate one point rider for each class in the Varsity and Junior Varsity and Future divisions. Different riders may be designated for flat and fences. A champion and reserve will be awarded to (1) The High Point Upper School Team and (2) The High Point Futures Team. Points will be awarded as follows: 1st=7 points, 2nd=5 points, 3rd=4 points, 4th=3 points, 5th=2 points, 6th=1 point.

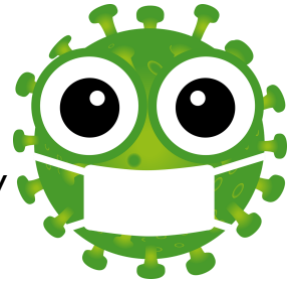
-Sportsmanship Award will be given to the individual chosen by show officials to exemplify outstanding qualities of good sportsmanship.

-Horse of the Show Award (4509.5) - The EHC of each regular IEA sanctioned show will award the “Horse of the Show” to be chosen by the judge and/or show steward. The award should be given to the horse, regardless of points earned during the course of competition, who best demonstrated fair and generous treatment toward its riders.

**Questions: Sara Turriago, Show Manager – topsailequestrian@aol.com or 914-602-2693 cell
Susan Bidy, Show Secretary - sbiddy@yahoo.com or 678-462-4629 cell**

The concession stand will NOT be open during the show. Individuals should provide their own food and beverages. Tent set-ups will not be allowed for the show. Please limit the number of spectators as much as possible and distance from others. Riders should only be in the arena just prior to their class beginning.

Face covering must be worn where there is a possibility of being within six feet of other individuals (who are not members of their immediate household), and when not mounted on a horse. Attendees will be expected to provide their own masks. Please do not attend if you are ill or have been exposed to the COVID-19 virus.



All IEA Region 8 riders are invited to participate in a written Horsemanship Test, from 9:00 am until 1:00 pm. Study information can be found in the "Horsemanship Study Guide" from the USHJA available online at https://www.ushja.org/programs/youth/documents/HQC_StudyGuide_Rev_01-2015.pdf.

Riders may register for \$1 each on the entry form or at the show. Individual points and ribbons will be awarded to the top six scores.

WE NEED HORSES!

All entering teams are welcome to contribute horses to the competition. The more horses we have means the more entries we can accept. We greatly appreciate your cooperation.



For the safety of our riders and horses, only registered service dogs will be permitted on the show grounds.

TOPSAIL EQUESTRIAN

5581 Hyde Park Road, Ravenel, SC 29470

Directions

From 17 North: Make a left at the light (Hardee's) onto Rt. 165. Hyde Park Rd is on the right in 3.4 miles. Topsail is on the right in just under 4 miles.

From 526:

From exit 11, Glenn McConnell: Left on Bees Ferry Rd, Right on 17 S

From 17 South: Right on Davison Rd/County Line Rd, Hyde Park Rd is about 5 miles down on your left.

From 165 South: Left onto County Line Rd, Hyde Park is just under 5 miles on your left

Area Hotels

Creekside Lands Inn

2545 Savannah Hwy, Charleston, SC 29414.

(843) 763-8885

Hawthorn Suites by Wyndham

2455 Savannah Hwy, Charleston, SC 29414

(843) 225-4411

Hampton Inn and Suites

678 Citadel Haven Dr, Charleston, SC 29414

(843) 573-1200.



Stall and Shavings Reservation Form

Topsail Hyde Park Haunting II

October 24-25, 2020



Stalls and shavings must be reserved in advance with this form and sent in with your entries

- No charge for horse stalls or shavings

TEAM: _____

Number of horse stalls Saturday _____

Number of horse stalls Sunday _____

Number of shavings _____



Warm Up Riders Are Needed



Please furnish names of qualified riders who are available to school horses. Remember that only adults 18 & older, professionals, & currently registered Varsity Open riders who are not competing at this show or who have finished competing for the day may participate in schooling horses

Name	Skill Level	IEA Member (Y/N)	Over 18 (Y/N)

Topsail Equestrian IEA Show

Saturday, October 24, 2020

UPPER SCHOOL Hunt Seat Entry

Mail to:
Susan Biddy, 125 Whisperwood Ct, Roswell, GA 30075

IEA Show #HB4059, Saturday 10/24/20

Name of Team _____

Team Contact _____

Email _____

Phone _____

	Priority Entry	Weight under 100	Weight over 150	Weight over 200	Height under 5'	Height over 5' 6"	V Open off	Varsity Open Flat	Varsity Int off	Varsity Int Flat	JV Novice off	JV Novice Flat	JV Beginner WTC	JV Beginner WT	Fees \$40/class
Rider Name							1	2	3	4	5	6	7	8	
Total Amount Due:															

A team roster showing proof of rider eligibility must be included with the entry form per rule 5314.

Total Amount Enclosed: _____

In exchange for entrance to and participation in the show, this entry constitutes an agreement and affirmation that the team making it, and each of its riders, coaches, trainers, and representatives shall accept and abide by the Rules and Regulations of the IEA and of the Show, and that each rider, coach and Team: (1) is a member in good standing of IEA, (2) is eligible as entered, and (3) will accept as final all rulings of IEA and the show steward (or committee) with respect to their conduct. Also, through participation each rider, rider's parents/legal guardians, coach, trainer, and participant acknowledges THAT HORSES ARE INTRINSICALLY DANGEROUS AND UNPREDICTABLE AND CAN CAUSE SERIOUS INJURY OR DEATH, thus each agrees to indemnify, defend and hold harmless IEA, its officers, directors, members, employees, Executive Director, National Steward, agents and representatives, the Event Host Coordinator, the host team and facility, the show stewards, stewards committee members, the show judges, the show secretary, all show organizers and officials, all medical personnel, and all persons, stables, and others providing facilities, horses or equipment for the Show, other riders, coaches, teams and team sponsoring institutions, from any claim, action or suit, for injury, property damage or death sustained by the individual, rider, entity, coach, trainer, or participant while traveling to, from and around the show, while staying in the city for the show, during participation in the show and while at the show. This entry constitutes an acceptance of the hired officials at this event.

The Interscholastic Equestrian Association (IEA) recognizes the health and safety of participants as a top priority, and will continue to define important safety measures in response to COVID-19. However, participants, attendees, vendors and all others who may be physically present at an IEA event must be aware and acknowledge that attendance at any group sporting event carries with it the risk of exposure to airborne viruses, including COVID-19. By signing below, you acknowledge the inherent risks, including the public health risk presented by the Coronavirus, of participation/attendance in a group sporting event, and you specifically agree that IEA cannot guarantee your personal physical safety and cannot be held liable for participants' or attendees' possible exposure to viral disease.

Programs may be modified or suspended immediately and without notice because of force majeure causes beyond the IEA's reasonable control and occurring without its fault or negligence including, but not limited to, acts of god, fire, wars, governmental action, terrorism, epidemic, pandemic, or any other event beyond the IEA's control.

It is the responsibility of the team coach(es) to confirm that they, their riders and attending family members have self-monitored their temperature once daily prior to entering the competition grounds. Anyone with a temperature of 99.5° F or higher may not enter the facility.

Coach's Signature: _____

Topsail Equestrian IEA Show

Saturday, October 24, 2020

FUTURES Hunt Seat Entry

Mail to:
Susan Biddy, 125 Whisperwood Ct, Roswell, GA 30075

IEA Show #HB4059, Saturday 10/24/20

Name of Team _____

Team Contact _____

Email _____

Phone _____

	Priority Entry	Weight under 100	Weight over 150	Weight over 200	Height under 5'	Height over 5' 6"	Future Int O/F	Future Int Flat	Future Nov O/F	Future Nov Flat	Future Beg WTC	Future Beg WT	Fees \$40/class
Rider Name							9	10	11	12	13	14	
Total Amount Due:													

A team roster showing proof of rider eligibility must be included with the entry form per rule 5314.

Total Amount Enclosed: _____

In exchange for entrance to and participation in the show, this entry constitutes an agreement and affirmation that the team making it, and each of its riders, coaches, trainers, and representatives shall accept and abide by the Rules and Regulations of the IEA and of the Show, and that each rider, coach and Team: (1) is a member in good standing of IEA, (2) is eligible as entered, and (3) will accept as final all rulings of IEA and the show steward (or committee) with respect to their conduct. Also, through participation each rider, rider's parents/legal guardians, coach, trainer, and participant acknowledges THAT HORSES ARE INTRINSICALLY DANGEROUS AND UNPREDICTABLE AND CAN CAUSE SERIOUS INJURY OR DEATH, thus each agrees to indemnify, defend and hold harmless IEA, its officers, directors, members, employees, Executive Director, National Steward, agents and representatives, the Event Host Coordinator, the host team and facility, the show stewards, stewards committee members, the show judges, the show secretary, all show organizers and officials, all medical personnel, and all persons, stables, and others providing facilities, horses or equipment for the Show, other riders, coaches, teams and team sponsoring institutions, from any claim, action or suit, for injury, property damage or death sustained by the individual, rider, entity, coach, trainer, or participant while traveling to, from and around the show, while staying in the city for the show, during participation in the show and while at the show. This entry constitutes an acceptance of the hired officials at this event.

The Interscholastic Equestrian Association (IEA) recognizes the health and safety of participants as a top priority, and will continue to define important safety measures in response to COVID-19. However, participants, attendees, vendors and all others who may be physically present at an IEA event must be aware and acknowledge that attendance at any group sporting event carries with it the risk of exposure to airborne viruses, including COVID-19. By signing below, you acknowledge the inherent risks, including the public health risk presented by the Coronavirus, of participation/attendance in a group sporting event, and you specifically agree that IEA cannot guarantee your personal physical safety and cannot be held liable for participants' or attendees' possible exposure to viral disease.

Programs may be modified or suspended immediately and without notice because of force majeure causes beyond the IEA's reasonable control and occurring without its fault or negligence including, but not limited to, acts of god, fire, wars, governmental action, terrorism, epidemic, pandemic, or any other event beyond the IEA's control.

It is the responsibility of the team coach(es) to confirm that they, their riders and attending family members have self-monitored their temperature once daily prior to entering the competition grounds. Anyone with a temperature of 99.5° F or higher may not enter the facility.

Coach's Signature: _____

Topsail Equestrian IEA Show

Sunday, October 25, 2020

UPPER SCHOOL Hunt Seat Entry

Mail to:
Susan Biddy, 125 Whisperwood Ct, Roswell, GA 30075

IEA Show #HB4060, Sunday 10/25/20

Name of Team _____

Team Contact _____

Email _____

Phone _____

	Priority Entry	Weight under 100	Weight over 150	Weight over 200	Height under 5'	Height over 5' 6"	V Open off	Varsity Open Flat	Varsity Int off	Varsity Int Flat	JV Novice off	JV Novice Flat	JV Beginner WTC	JV Beginner WT	Fees \$40/class
Rider Name							1	2	3	4	5	6	7	8	
Total Amount Due:															

A team roster showing proof of rider eligibility must be included with the entry form per rule 5314.

Total Amount Enclosed: _____

In exchange for entrance to and participation in the show, this entry constitutes an agreement and affirmation that the team making it, and each of its riders, coaches, trainers, and representatives shall accept and abide by the Rules and Regulations of the IEA and of the Show, and that each rider, coach and Team: (1) is a member in good standing of IEA, (2) is eligible as entered, and (3) will accept as final all rulings of IEA and the show steward (or committee) with respect to their conduct. Also, through participation each rider, rider's parents/legal guardians, coach, trainer, and participant acknowledges THAT HORSES ARE INTRINSICALLY DANGEROUS AND UNPREDICTABLE AND CAN CAUSE SERIOUS INJURY OR DEATH, thus each agrees to indemnify, defend and hold harmless IEA, its officers, directors, members, employees, Executive Director, National Steward, agents and representatives, the Event Host Coordinator, the host team and facility, the show stewards, stewards committee members, the show judges, the show secretary, all show organizers and officials, all medical personnel, and all persons, stables, and others providing facilities, horses or equipment for the Show, other riders, coaches, teams and team sponsoring institutions, from any claim, action or suit, for injury, property damage or death sustained by the individual, rider, entity, coach, trainer, or participant while traveling to, from and around the show, while staying in the city for the show, during participation in the show and while at the show. This entry constitutes an acceptance of the hired officials at this event.

The Interscholastic Equestrian Association (IEA) recognizes the health and safety of participants as a top priority, and will continue to define important safety measures in response to COVID-19. However, participants, attendees, vendors and all others who may be physically present at an IEA event must be aware and acknowledge that attendance at any group sporting event carries with it the risk of exposure to airborne viruses, including COVID-19. By signing below, you acknowledge the inherent risks, including the public health risk presented by the Coronavirus, of participation/attendance in a group sporting event, and you specifically agree that IEA cannot guarantee your personal physical safety and cannot be held liable for participants' or attendees' possible exposure to viral disease.

Programs may be modified or suspended immediately and without notice because of force majeure causes beyond the IEA's reasonable control and occurring without its fault or negligence including, but not limited to, acts of god, fire, wars, governmental action, terrorism, epidemic, pandemic, or any other event beyond the IEA's control.

It is the responsibility of the team coach(es) to confirm that they, their riders and attending family members have self-monitored their temperature once daily prior to entering the competition grounds. Anyone with a temperature of 99.5° F or higher may not enter the facility.

Coach's Signature: _____

Topsail Equestrian IEA Show

Sunday, October 25, 2020

FUTURES Hunt Seat Entry

Mail to:
Susan Biddy, 125 Whisperwood Ct, Roswell, GA 30075

IEA Show #HB4060, Sunday 10/25/20

Name of Team _____

Team Contact _____

Email _____

Phone _____

	Priority Entry	Weight under 100	Weight over 150	Weight over 200	Height under 5'	Height over 5' 6"	Future Int O/F	Future Int Flat	Future Nov O/F	Future Nov Flat	Future Beg WTC	Future Beg WT	Fees \$40/class
Rider Name							9	10	11	12	13	14	
Total Amount Due:													

A team roster showing proof of rider eligibility must be included with the entry form per rule 5314.

Total Amount Enclosed: _____

In exchange for entrance to and participation in the show, this entry constitutes an agreement and affirmation that the team making it, and each of its riders, coaches, trainers, and representatives shall accept and abide by the Rules and Regulations of the IEA and of the Show, and that each rider, coach and Team: (1) is a member in good standing of IEA, (2) is eligible as entered, and (3) will accept as final all rulings of IEA and the show steward (or committee) with respect to their conduct. Also, through participation each rider, rider's parents/legal guardians, coach, trainer, and participant acknowledges THAT HORSES ARE INTRINSICALLY DANGEROUS AND UNPREDICTABLE AND CAN CAUSE SERIOUS INJURY OR DEATH, thus each agrees to indemnify, defend and hold harmless IEA, its officers, directors, members, employees, Executive Director, National Steward, agents and representatives, the Event Host Coordinator, the host team and facility, the show stewards, stewards committee members, the show judges, the show secretary, all show organizers and officials, all medical personnel, and all persons, stables, and others providing facilities, horses or equipment for the Show, other riders, coaches, teams and team sponsoring institutions, from any claim, action or suit, for injury, property damage or death sustained by the individual, rider, entity, coach, trainer, or participant while traveling to, from and around the show, while staying in the city for the show, during participation in the show and while at the show. This entry constitutes an acceptance of the hired officials at this event.

The Interscholastic Equestrian Association (IEA) recognizes the health and safety of participants as a top priority, and will continue to define important safety measures in response to COVID-19. However, participants, attendees, vendors and all others who may be physically present at an IEA event must be aware and acknowledge that attendance at any group sporting event carries with it the risk of exposure to airborne viruses, including COVID-19. By signing below, you acknowledge the inherent risks, including the public health risk presented by the Coronavirus, of participation/attendance in a group sporting event, and you specifically agree that IEA cannot guarantee your personal physical safety and cannot be held liable for participants' or attendees' possible exposure to viral disease.

Programs may be modified or suspended immediately and without notice because of force majeure causes beyond the IEA's reasonable control and occurring without its fault or negligence including, but not limited to, acts of god, fire, wars, governmental action, terrorism, epidemic, pandemic, or any other event beyond the IEA's control.

It is the responsibility of the team coach(es) to confirm that they, their riders and attending family members have self-monitored their temperature once daily prior to entering the competition grounds. Anyone with a temperature of 99.5° F or higher may not enter the facility.

Coach's Signature: _____



2020-2021

IEA MEMBER PARTNERS & SPONSORS

We greatly appreciate the support of all our Member Partners and Official Sponsors and ask you to thank them with your patronage.

MEMBER PARTNERS



NATIONAL REINING HORSE ASSOCIATION



UNITED STATES
HUNTER JUMPER ASSOCIATION
UNITED STATES HUNTER JUMPER ASSOCIATION



UNITED STATES EQUESTRIAN
FEDERATION



AMERICAN
PAINT
HORSE
ASSOCIATION
AMERICAN PAINT
HORSE ASSOCIATION



Where it all begins
THE UNITED STATES
PONY CLUBS, INC.



NATIONAL SNAFFLE
BIT ASSOCIATION



INTERCOLLEGIATE HORSE SHOWS
ASSOCIATION



NATIONAL COLLEGIATE
EQUESTRIAN ASSOCIATION



USDF
UNITED STATES
DRESSAGE FEDERATION



INTERCOLLEGIATE
DRESSAGE ASSOCIATION



CERTIFIED HORSEMANSHIP
ASSOCIATION



It's about the journey
WESTERN DRESSAGE ASSOCIATION
OF AMERICA



AMERICAN QUARTER
HORSE ASSOCIATION
AMERICAN QUARTER HORSE
ASSOCIATION

OFFICIAL SPONSORS



Official Western Saddle of IEA



Official Show Clothes of IEA



Official Helmet of IEA



Official Tack and Equipment
Supplier of IEA

For more information on becoming an IEA Member Partner or Sponsor, contact Megan Taylor at megan@rideiea.org.